

## Coaxial Termination

DC-40GHz/SSMP/1W

Model: TT1-SSMP-40-F

### Features:

- Operating Frequency DC to 40 GHz
- High Return Loss
- Instrumentation Grade

### Applications:

- laboratory test
- Communication equipment

### Electrical Characteristics:

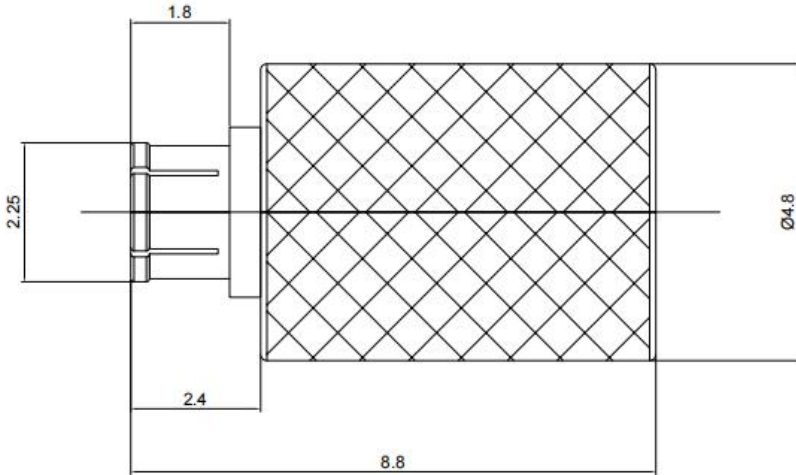
| Parameter       |           | Min | Typ | Max  | Units |
|-----------------|-----------|-----|-----|------|-------|
| Frequency Range |           | DC  |     | 40   | GHz   |
| VSWR            | @DC-18GHz |     |     | 1.21 | :1    |
|                 | @DC-40GHz |     |     | 1.38 | :1    |
| Power Handling  |           |     |     | 1    | W     |
| Impedance       |           |     | 50  |      | Ohms  |

### Environmental And Physical Characteristics:

| Description           | Parameter                              | Units |
|-----------------------|--|-------|
| Operating Temperature | -55 To +100                            | °C    |
| Storage Temperature   | -55 to +125                            | °C    |
| Body Material         | Beryllium bronze, Ternary alloy plated |       |
| Center Conductor      | Gold-plated, beryllium bronze          |       |
| Connectors            | SSMP                                   |       |
| Weight                | 0.8                                    | g     |

**Outline Drawing:**

Unit:mm

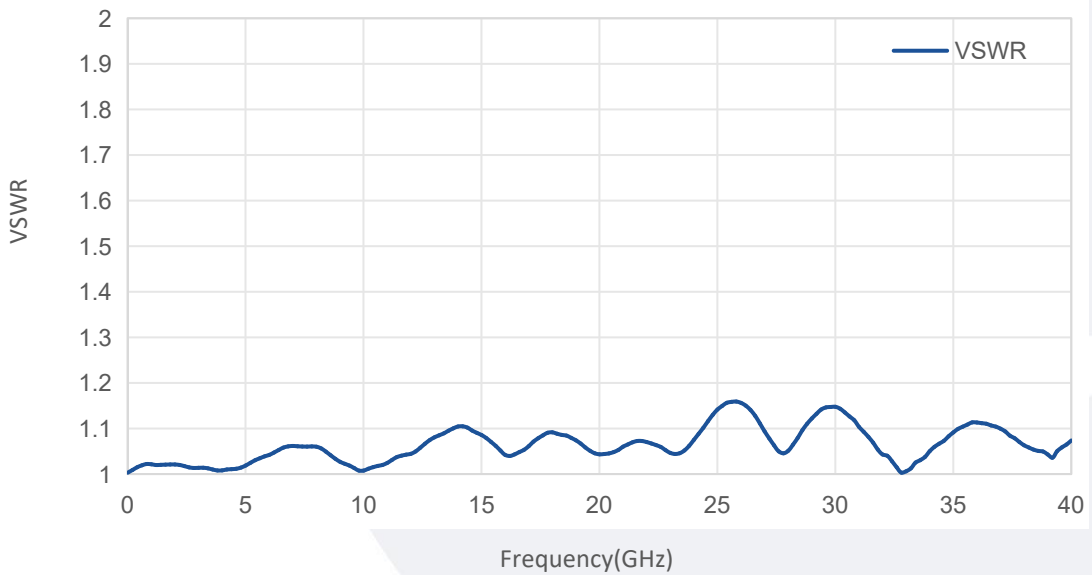


**Ordering Information:**

| Base Number   | Description                          |
|---------------|--------------------------------------|
| TT1-SSMP-40-F | DC-40GHz,1W,SSMP Coaxial Termination |

**Typical Performance Data:**

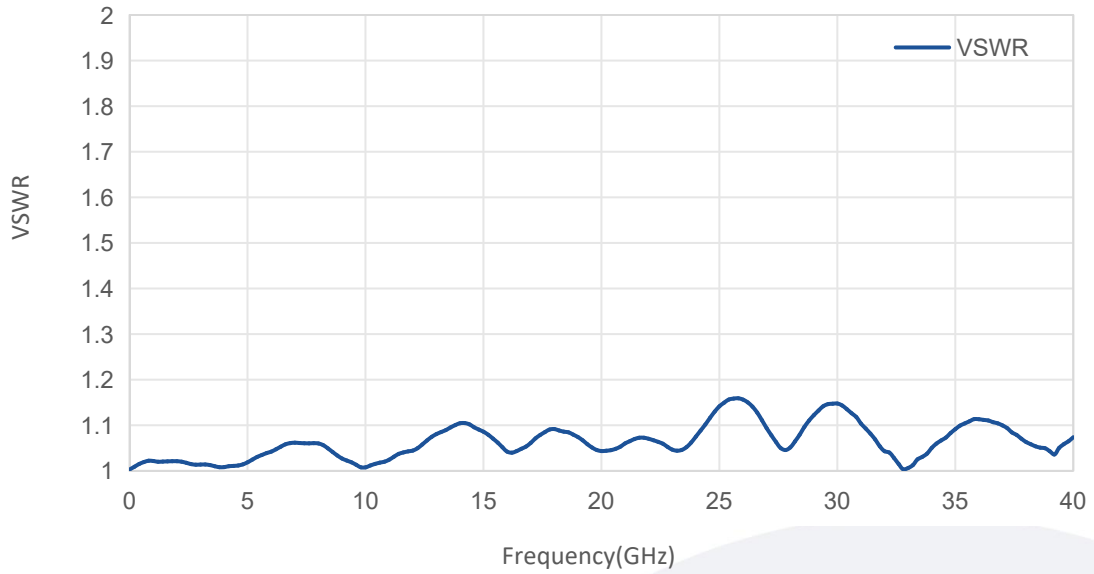
**VSWR vs Frequency**



Note: Above data is for ref only, actual data may vary from unit to unit depending on operating environment and other factors like material lots etc.

## Typical Performance Data:

### VSWR vs Frequency



Note: Above data is for ref only, actual data may vary from unit to unit depending on operating environment and other factors like material lots etc.